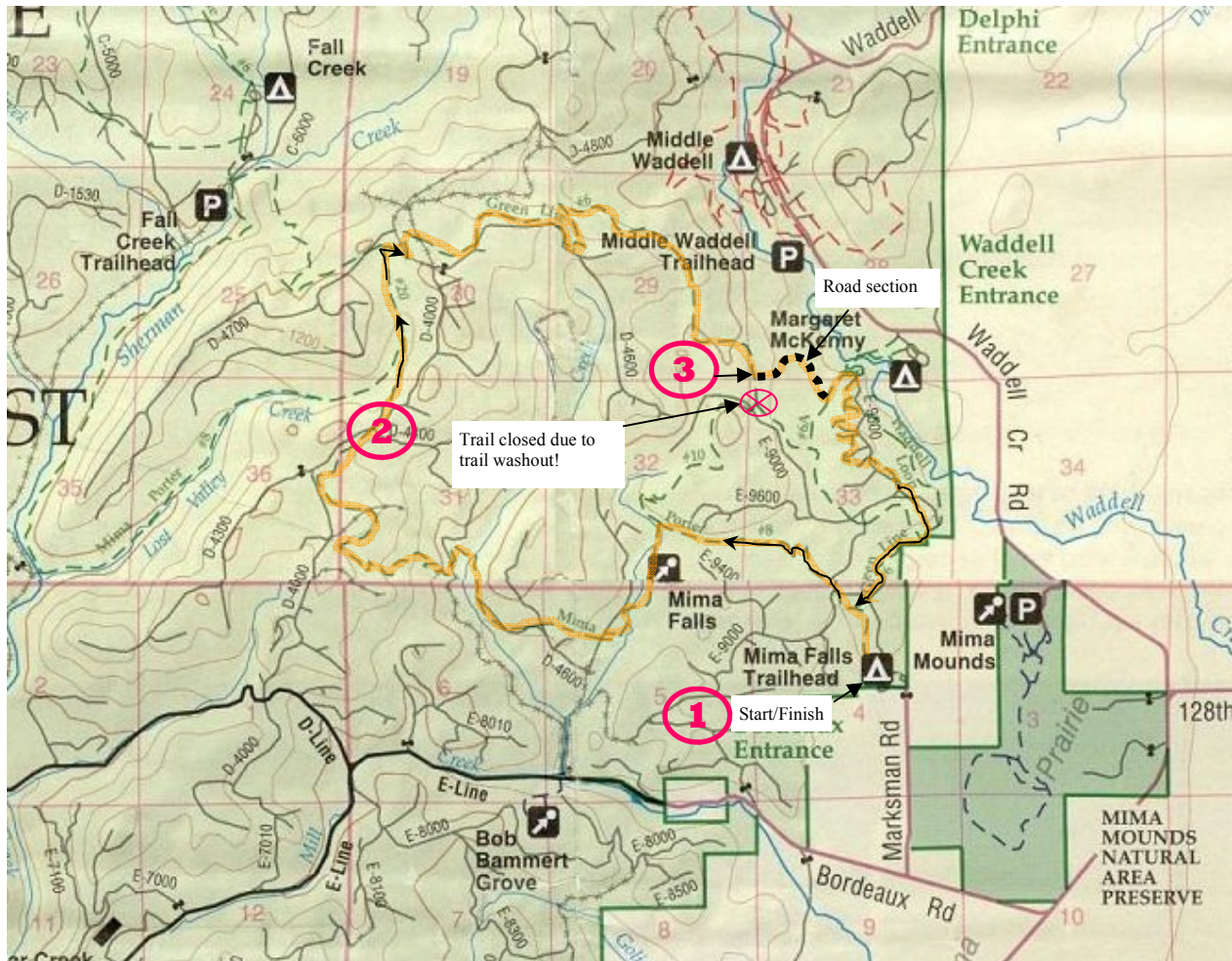


Capital Peak Mega Fat Ass 15 mile Loop Map

Repeat for 30 mile loop (See Course description for more details)

WARNING: This map was copied from a scanned version of the original Department of Natural Resources (2002) and is not intended to be used for anything other than the Capitol Peak Mega Fat Ass. This map does not warrant any trail conditions, trail closures or confusing trail signage.



2009 MEGA FAT ASS ALTERNATE COURSE DESCRIPTION

Map Legend

- Search and Rescue check point (pink numbers)
- Checkpoint 1 = Start/Finish Area
- Checkpoint 2 = D-4000 and Mima Porter #8
- Checkpoint 3 = Top of road reroute on Green Line #6 .

Mega Fat Ass Course (orange highlighted)

- Start at Mima Falls Trailhead
- LEFT on Mile Porter Trail #8
- RIGHT on Trail #20
- RIGHT on Green Line Trail #6
- LEFT on logging road labeled REROUTE
- LEFT on Trail #6a (cross high water area)
- RIGHT on Waddell Loop trail
- 2nd RIGHT on Waddell Loop trail (cross stream)
- Sharp RIGHT up spur trail up hill to Green Line
- LEFT on Green Line #6
- LEFT on Mima Porter #8 back to Mima Falls trailhead